

# PAVILION SQUARE

---

KUALA LUMPUR

LUXURY RESIDENCES

**PROJECT BRIEF**

FOR INTERNAL USE ONLY

An aerial photograph of Kuala Lumpur, Malaysia, during sunset. The sky is a mix of blue, orange, and yellow. The city is densely packed with skyscrapers, many of which are illuminated with lights. The Petronas Twin Towers are prominent in the center-right. The overall scene is a vibrant and modern urban landscape.

*PAVILION SQUARE*  
THE EPICENTER OF  
KUALA LUMPUR

**This information kit is for internal use only.**

This information kit is private and confidential, prepared strictly for internal use only, and should not be distributed to others. All information contained herein is intended for project discussion and training purposes only. Recipients of this information kit must not use it or any information contained herein for sales or marketing purposes. The final product and other information contained herein are subject to change at the developer's discretion.

SEAMLESSLY  
CONNECTED TO  
*PAVILION*  
*KUALA LUMPUR*

---



**This information kit is for internal use only.**

This information kit is private and confidential, prepared strictly for internal use only, and should not be distributed to others. All information contained herein is intended for project discussion and training purposes only. Recipients of this information kit must not use it or any information contained herein for sales or marketing purposes. The final product and other information contained herein are subject to change at the developer's discretion.

YOUR ENTRY TO  
*REFINED SOPHISTICATION*

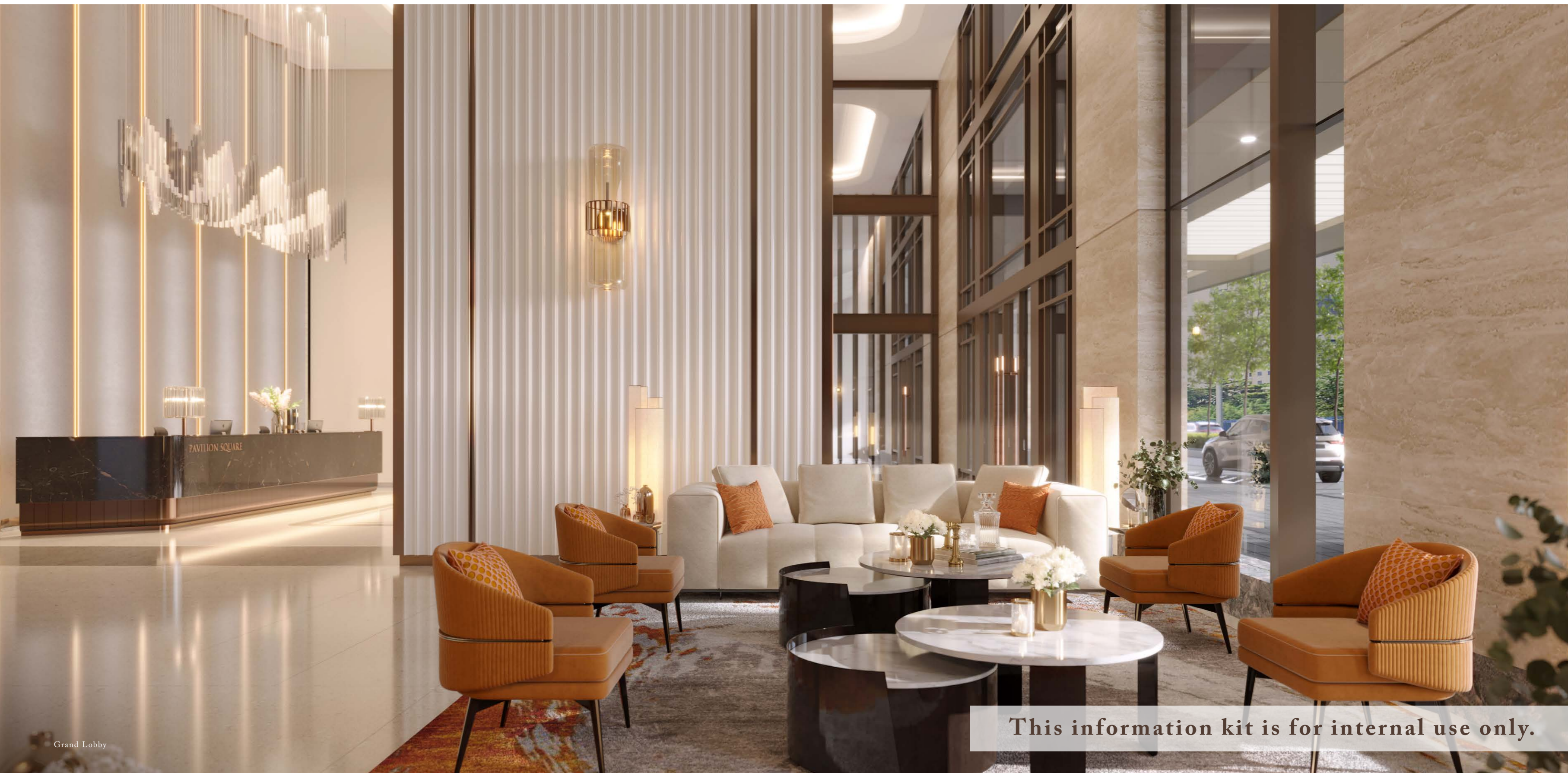


**This information kit is for internal use only.**

Drop-Off

This information kit is private and confidential, prepared strictly for internal use only, and should not be distributed to others. All information contained herein is intended for project discussion and training purposes only. Recipients of this information kit must not use it or any information contained herein for sales or marketing purposes. The final product and other information contained herein are subject to change at the developer's discretion.

# *A MAJESTIC LOBBY* FOR THE ELITES



Grand Lobby

**This information kit is for internal use only.**

This information kit is private and confidential, prepared strictly for internal use only, and should not be distributed to others. All information contained herein is intended for project discussion and training purposes only. Recipients of this information kit must not use it or any information contained herein for sales or marketing purposes. The final product and other information contained herein are subject to change at the developer's discretion.

# A SANCTUARY ABOVE THE CITY

OVER 70,000 SQ.FT. OF DIVERSE LIFESTYLE FACILITIES

118m  
Sky Pool

Level 67

Sky Garden

Level 66

15,000 sq.ft.  
Sky Wellness

Level 63A

This information kit is for internal use only.

This information kit is private and confidential, prepared strictly for internal use only, and should not be distributed to others. All information contained herein is intended for project discussion and training purposes only. Recipients of this information kit must not use it or any information contained herein for sales or marketing purposes. The final product and other information contained herein are subject to change at the developer's discretion.

# SKY GARDEN IN THE CLOUDS

AT THE PINNACLE OF LEVEL 66



**This information kit is for internal use only.**

Sky Garden

This information kit is private and confidential, prepared strictly for internal use only, and should not be distributed to others. All information contained herein is intended for project discussion and training purposes only. Recipients of this information kit must not use it or any information contained herein for sales or marketing purposes. The final product and other information contained herein are subject to change at the developer's discretion.

# *THE LARGEST SKY WELLNESS IN KUALA LUMPUR CITY CENTRE*

15,000 SQ.FT. OF FITNESS FACILITIES AT LEVEL 63A



**This information kit is for internal use only.**

This information kit is private and confidential, prepared strictly for internal use only, and should not be distributed to others. All information contained herein is intended for project discussion and training purposes only. Recipients of this information kit must not use it or any information contained herein for sales or marketing purposes. The final product and other information contained herein are subject to change at the developer's discretion.



# *COURTYARD GARDEN*

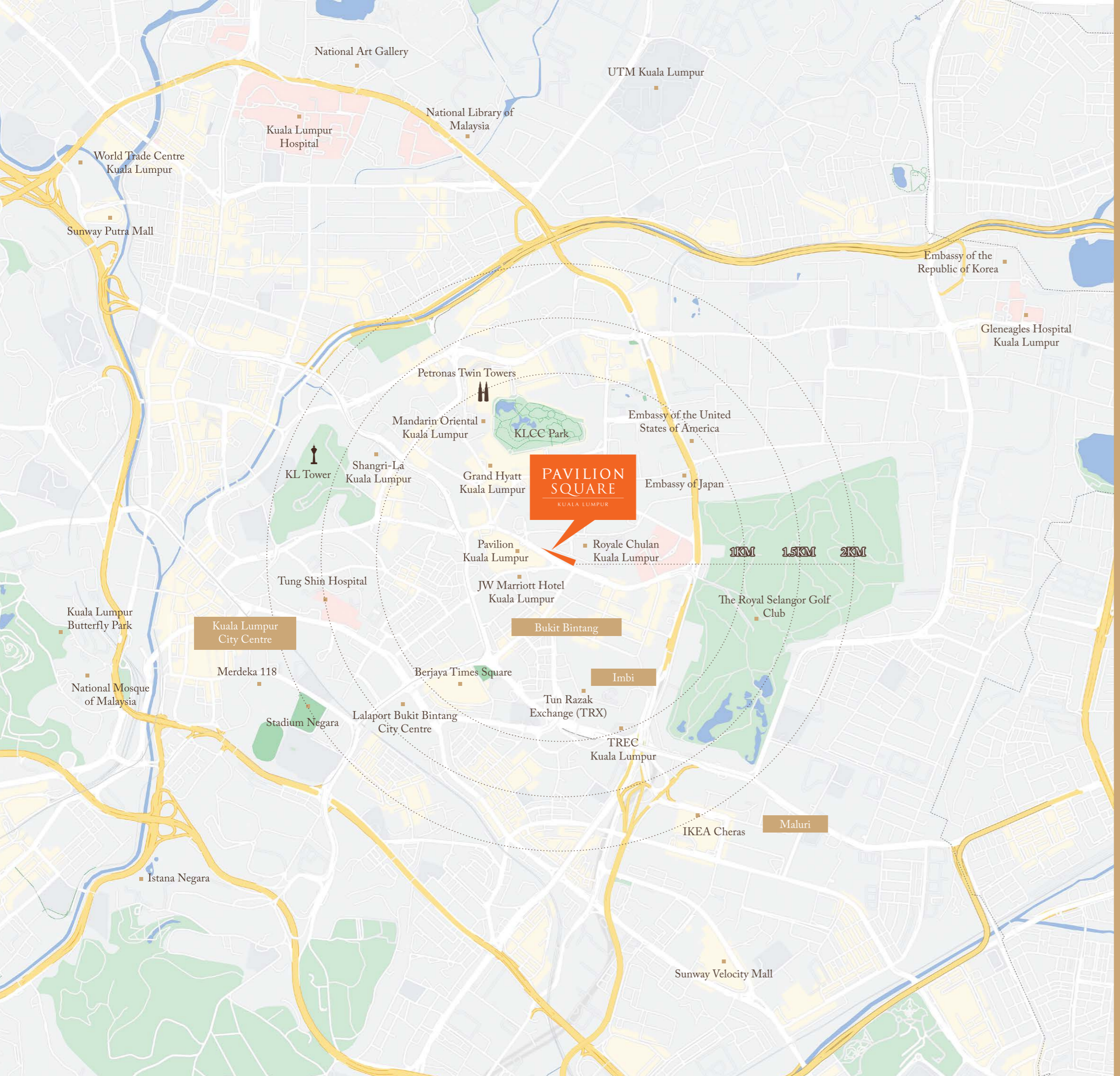
WITHIN THE URBAN LANDSCAPE AT LEVEL 12



Courtyard Garden

**This information kit is for internal use only.**

This information kit is private and confidential, prepared strictly for internal use only, and should not be distributed to others. All information contained herein is intended for project discussion and training purposes only. Recipients of this information kit must not use it or any information contained herein for sales or marketing purposes. The final product and other information contained herein are subject to change at the developer's discretion.



# PRIME RESIDENCE IN THE *HUB OF URBAN PULSE*

Located strategically in the Golden Triangle, Pavilion Square offers seamless access to amenities and landmarks, embodying convenient uptown living.

**MALLS**

- Pavilion Kuala Lumpur Shopping Mall
- Suria KLCC
- The Starhill
- Fahrenheit88

**FITNESS AND RECREATION**

- The Royal Selangor Golf Club
- KLCC Park
- KL Eco Forest Park

**LANDMARKS**

- KL Tower
- Petronas Twin Towers
- Merdeka Square
- Merdeka 118
- Tun Razak Exchange (TRX)

**TRANSPORTATION HUBS**

- Bukit Bintang MRT Station
- Conlay MRT Station
- Bukit Bintang Monorail Station

**MEDICAL**

- Prince Court Medical Centre
- Tung Shin Hospital
- Kuala Lumpur Hospital

**EDUCATION**

- EtonHouse Malaysia
- St. John's International Primary School and Secondary School
- The International School of Kuala Lumpur

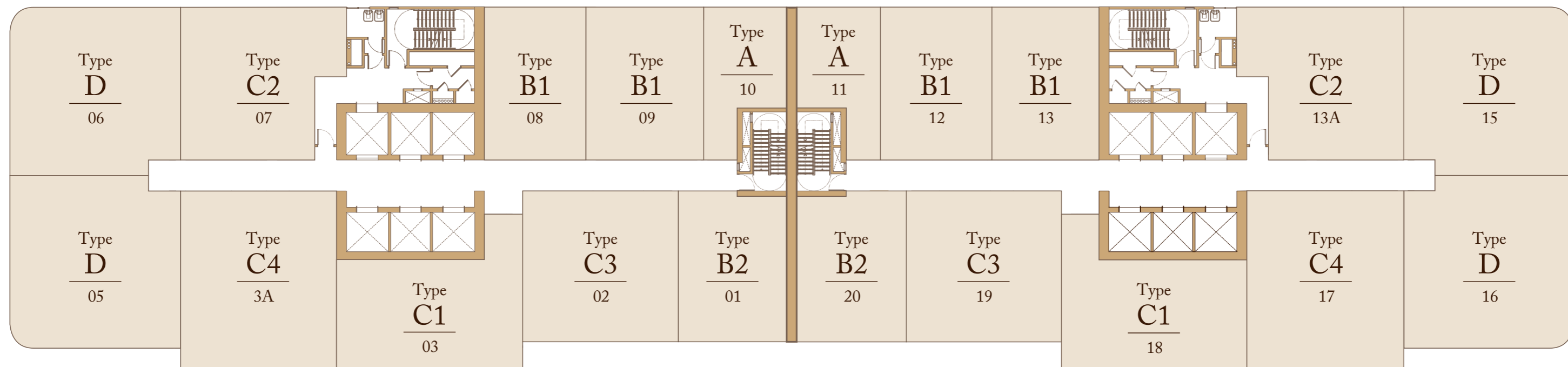


# OVERALL SITE PLAN



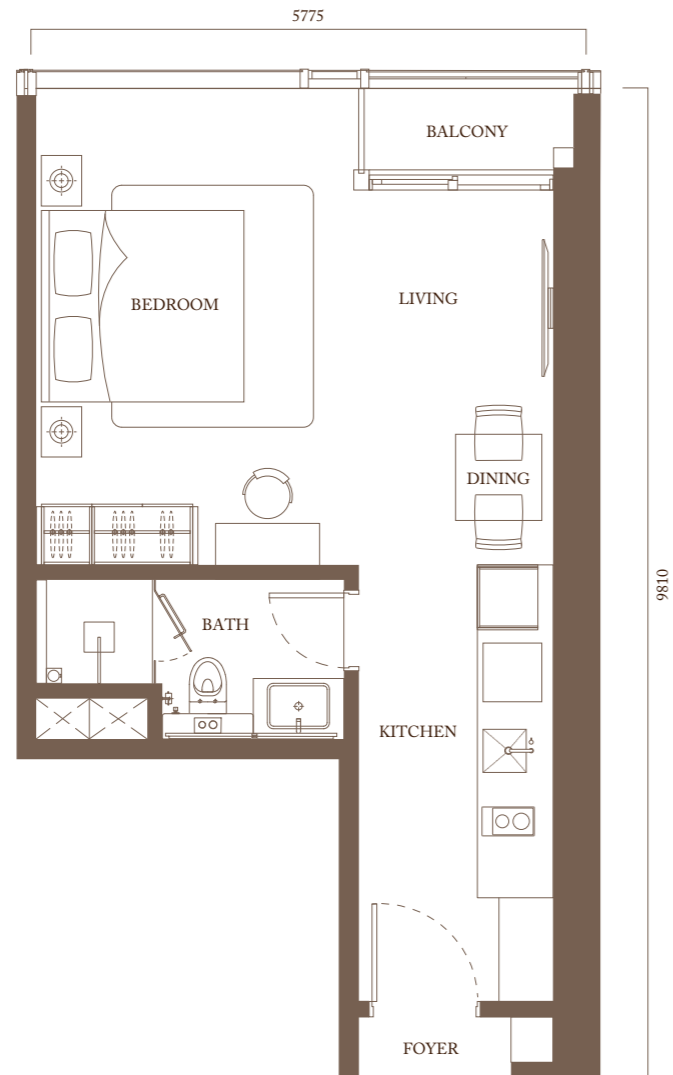
# TYPICAL FLOOR LAYOUT

Level 13A-37 & Level 39-62



# TYPE A

STUDIO  
504 sq.ft. (46.8 sq.m.)

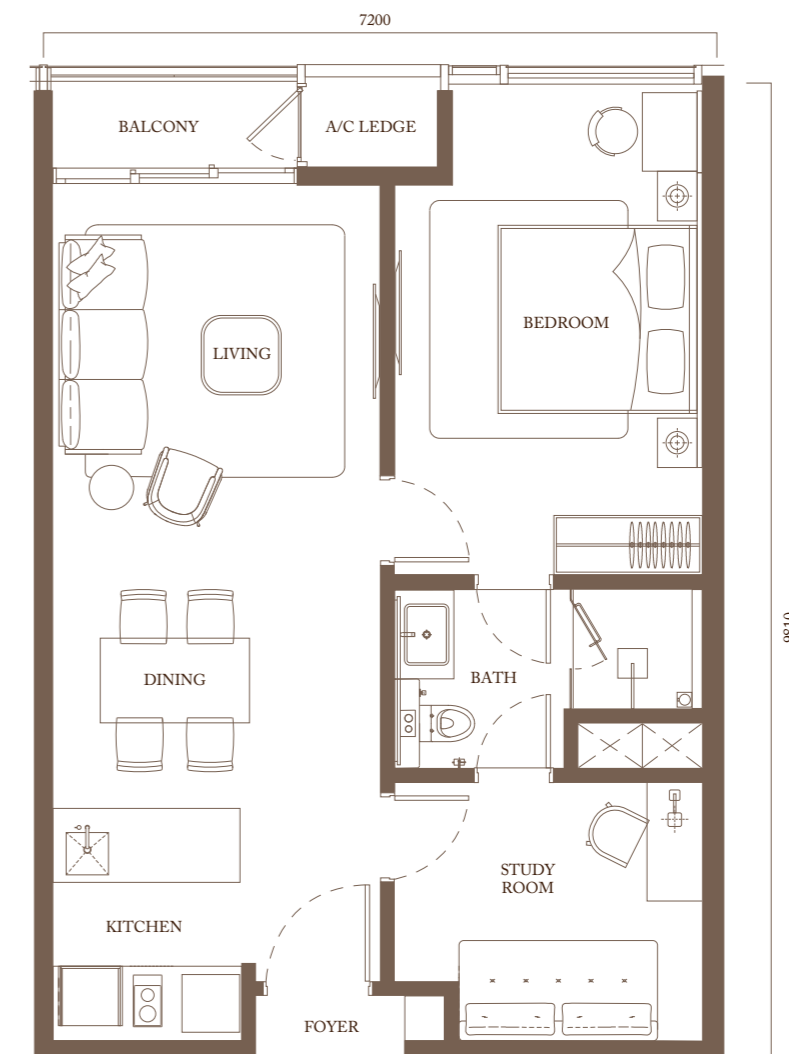


Level 13A-37



# TYPE B1

1 BEDROOM + STUDY  
770 sq.ft. (71.5 sq.m.)

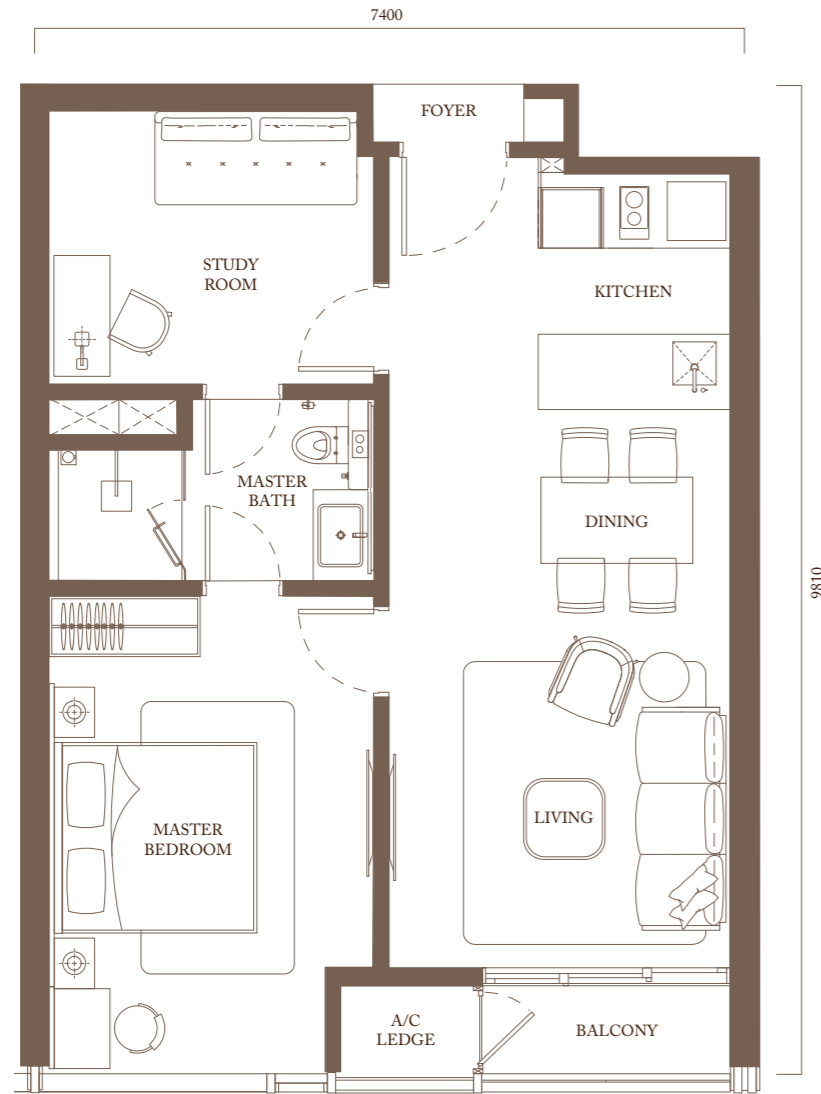


Level 13A-37

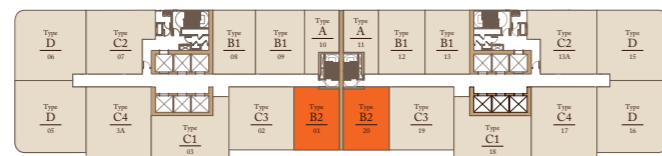


# TYPE B2

1 BEDROOM + STUDY  
772 sq.ft. (71.7 sq.m.)

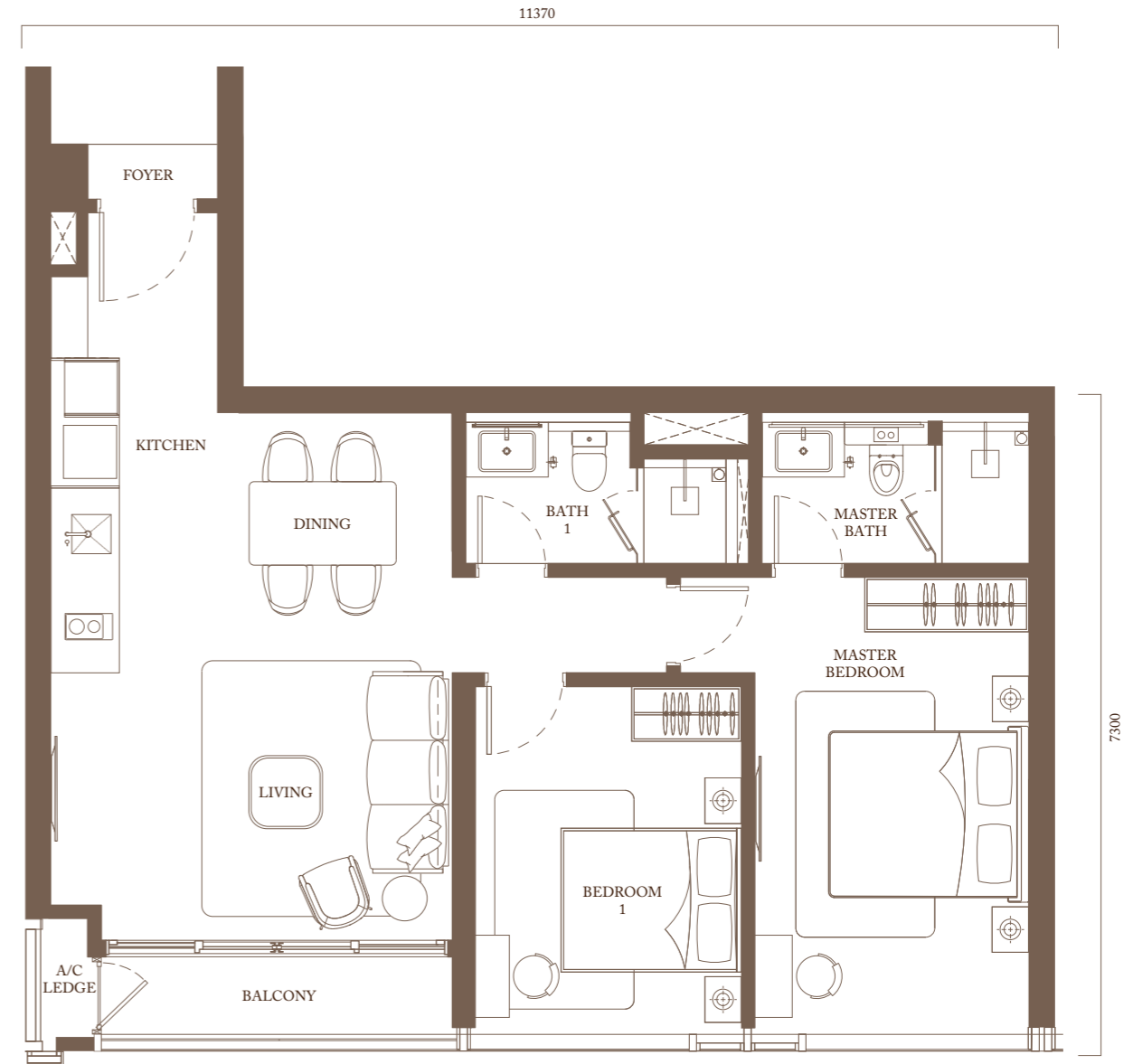


Level 13A-37

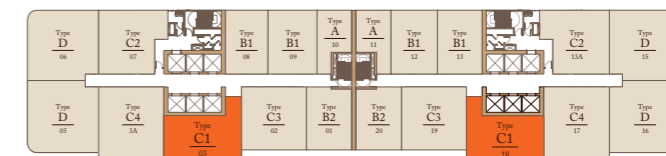


# TYPE C1

2 BEDROOMS  
966 sq.ft. (89.7 sq.m.)



Level 13A-37



# TYPE C2

2 BEDROOMS + STUDY  
978 sq.ft. (90.9 sq.m.)



Level 39-62

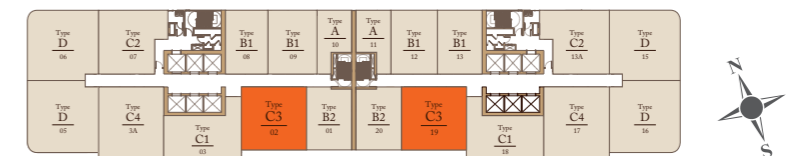


# TYPE C3

2 BEDROOMS + STUDY  
1,100 sq.ft. (102.2 sq.m.)



Level 39-62



# TYPE C4

2 BEDROOMS + STUDY  
1,272 sq.ft. (118.2 sq.m.)

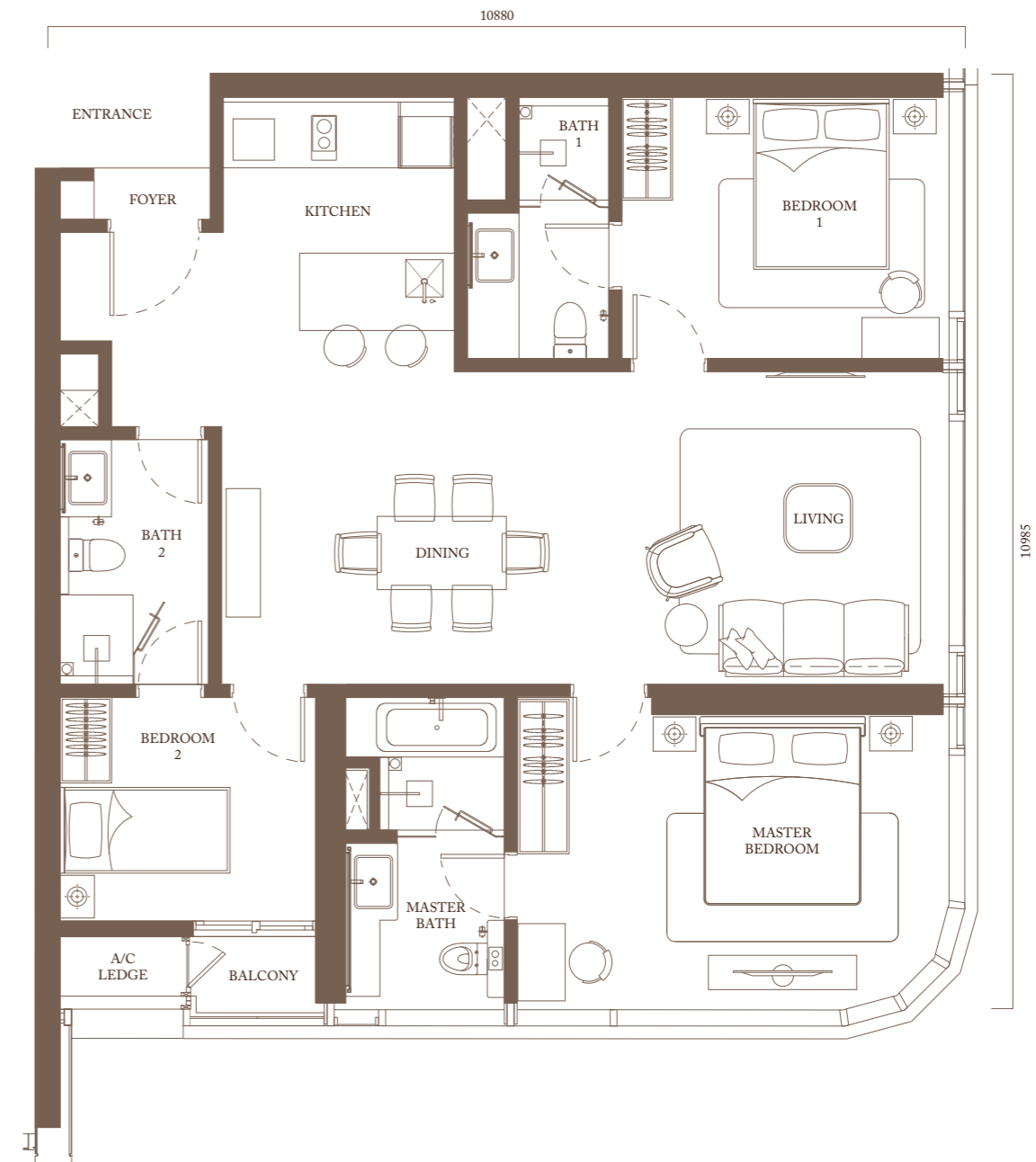


Level 39-62



# TYPE D

3 BEDROOMS  
1,255 sq.ft. (116.6 sq.m.)



Level 39-62





# ANOTHER PRESTIGIOUS PROJECT BY *PAVILION GROUP*



Known for its impressive collection of premium property developments, the Pavilion Group has become a household name synonymous with prestige and luxury. Pavilion Kuala Lumpur, the Pavilion Group's most distinguished development to date, has received numerous local and international awards over the years and continues to draw accolades to this day. A landmark in its own right, this iconic retail haven, which houses an array of international luxury brands and eateries, invites visitors to an unparalleled shopping experience.

## LOCATION MAP



### Show Unit Open for Viewing

+603 2332 8808 Pavilion Square Property Gallery  
Level 3, Menara Khuan Choo, 75A Jalan Raja Chulan, 50200 Kuala Lumpur.  
[www.PavilionSquareKL.com](http://www.PavilionSquareKL.com)



This advertisement is solely for registration purposes only and not to be treated as an offer for sales. The information contained in this advertisement is subject to change and cannot form part of an offer or contract. All illustrations and pictures are artist's impression only. The items are subject to variations, modifications and substitutions as may be recommended by the company's consultants and/or relevant approving authorities.

This information kit is private and confidential, prepared strictly for internal use only, and should not be distributed to others. All information contained herein is intended for project discussion and training purposes only. Recipients of this information kit must not use it or any information contained herein for sales or marketing purposes. The final product and other information contained herein are subject to change at the developer's discretion.