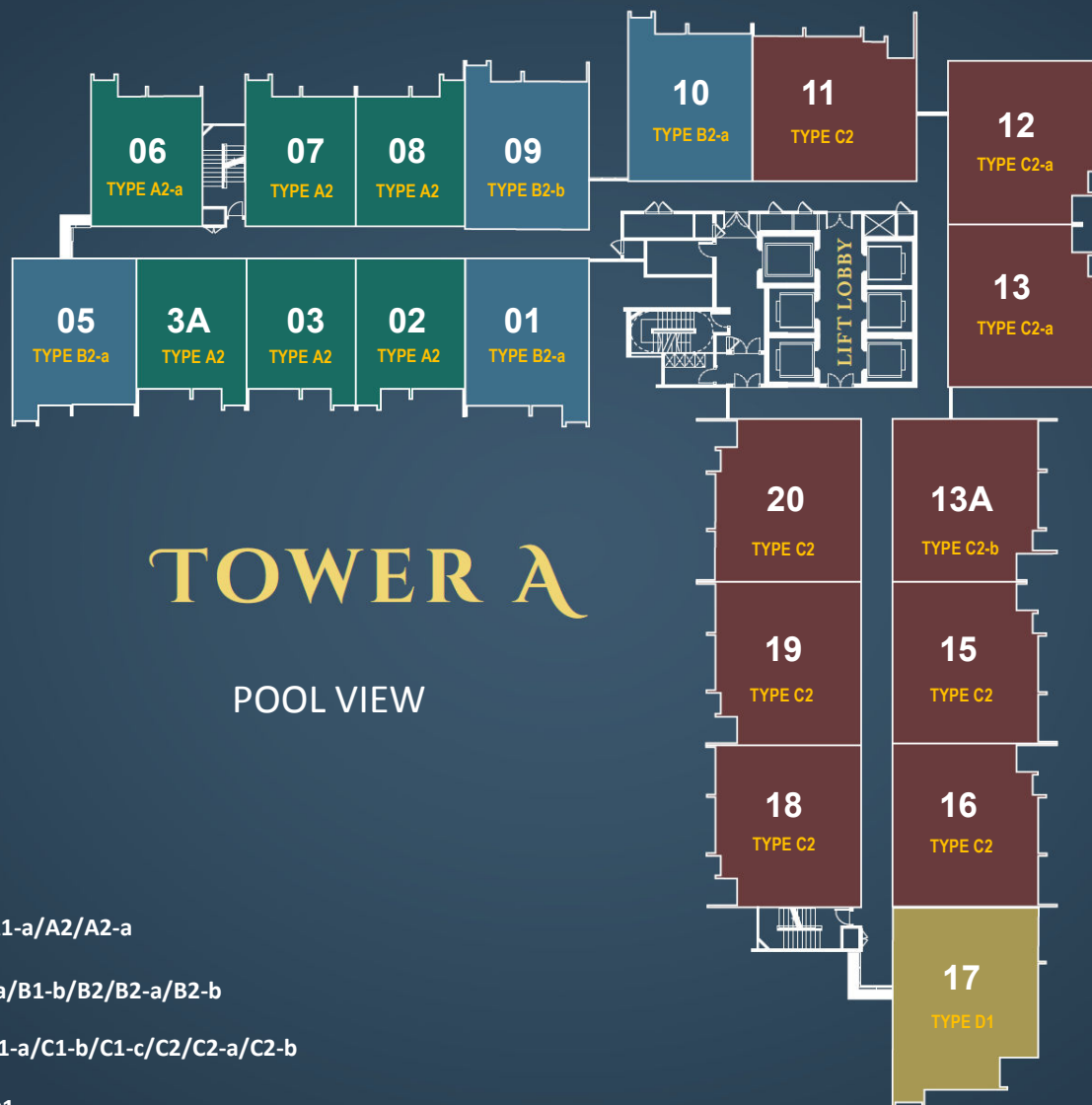


LEVEL 8



BANGSAR SOUTH

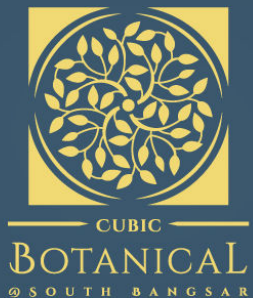


OLD KLANG ROAD/
TAMAN DESA

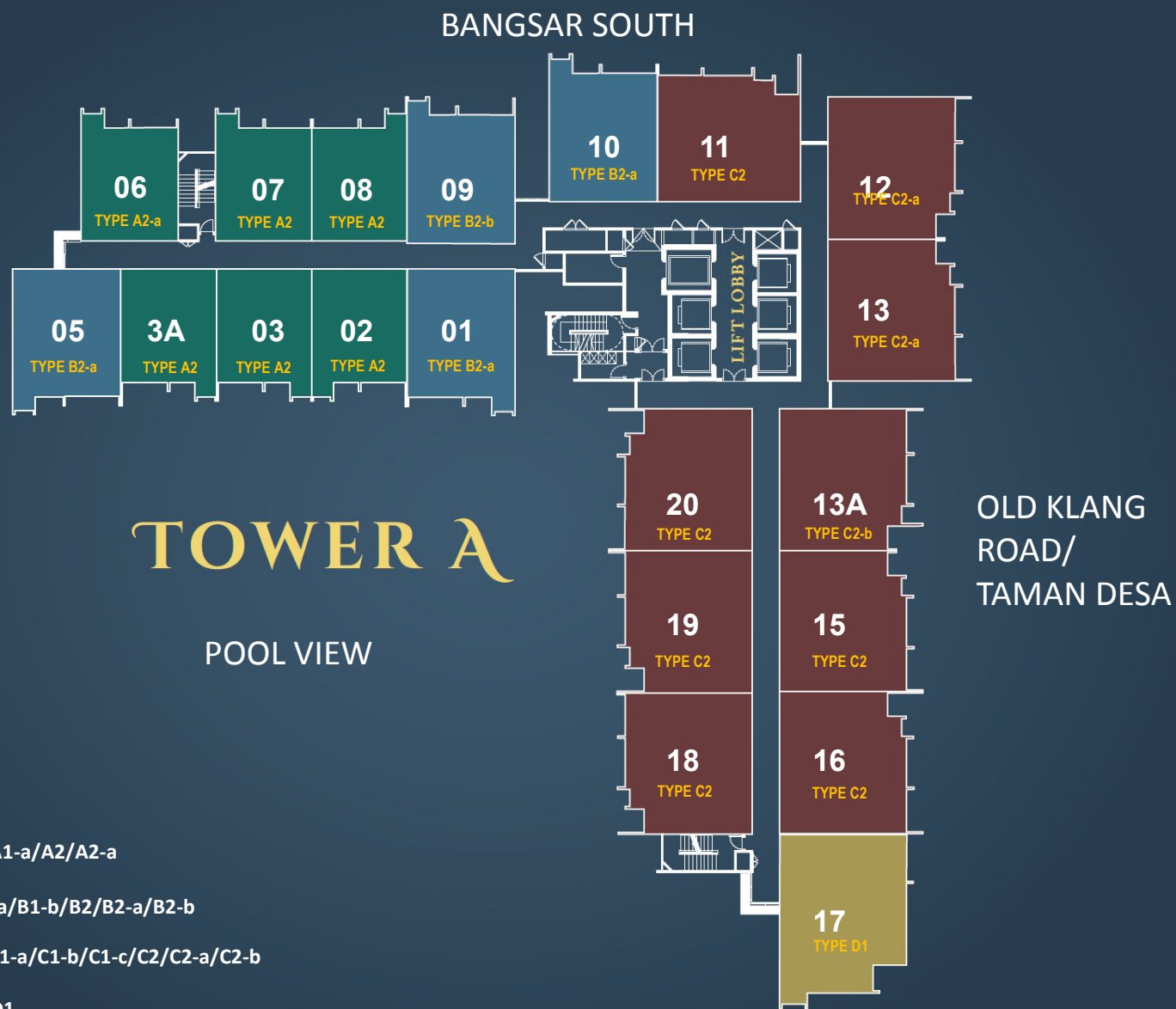
LEGEND:

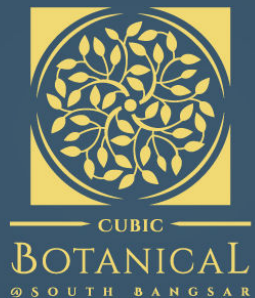
- A/A1-a/A2/A2-a
- B1-a/B1-b/B2/B2-a/B2-b
- C/C1-a/C1-b/C1-c/C2/C2-a/C2-b
- D/D1





LEVEL 9 – 20
Except Level 17

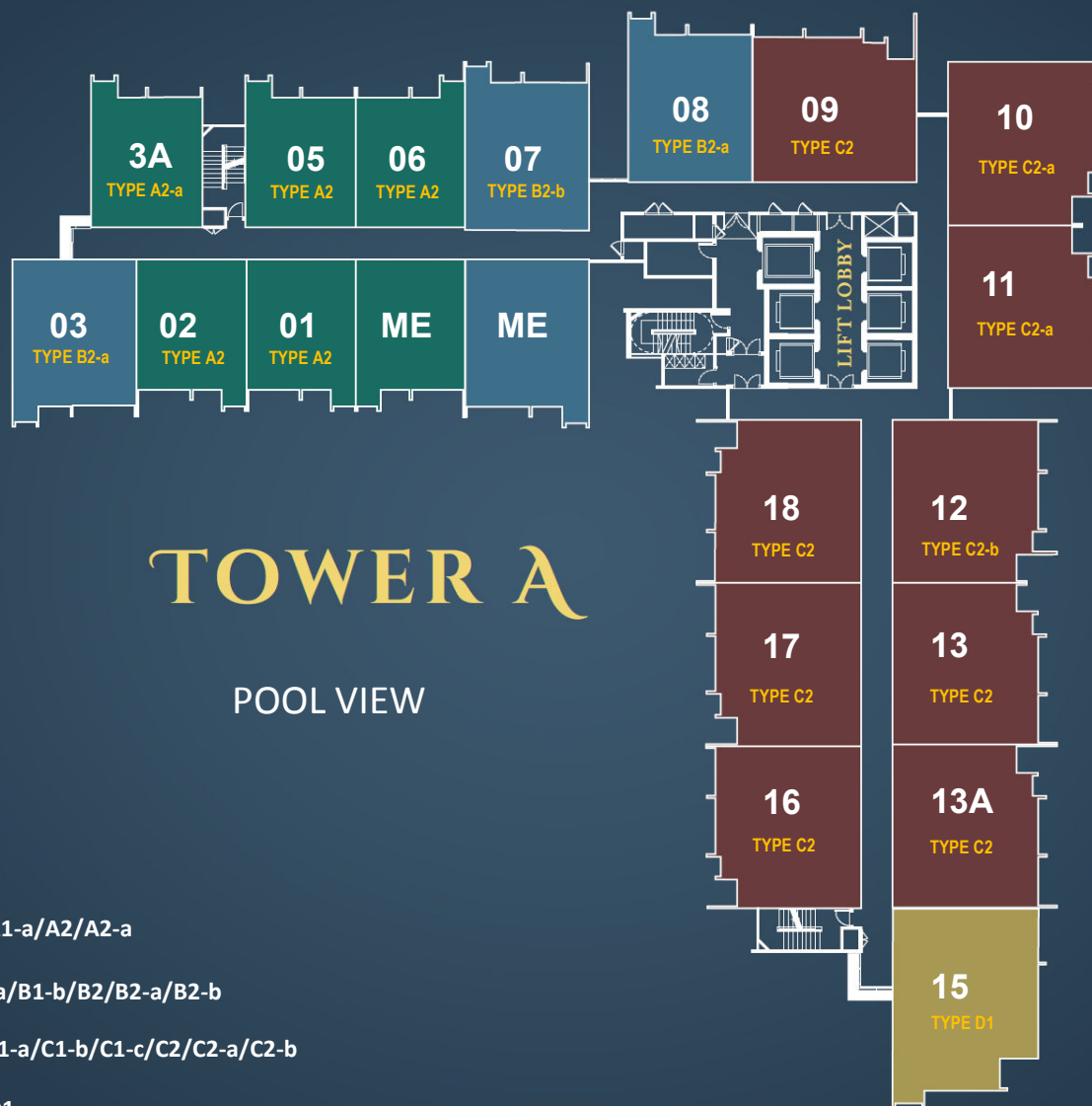




LEVEL 17



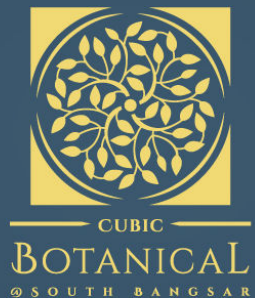
BANGSAR SOUTH



OLD KLANG
ROAD/
TAMAN DESA

LEGEND:

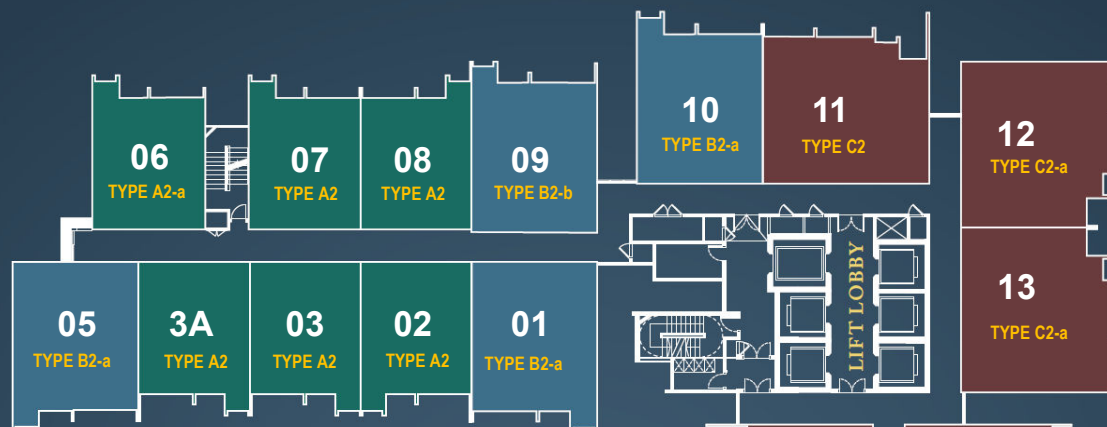
- A/A1-a/A2/A2-a
- B1-a/B1-b/B2/B2-a/B2-b
- C/C1-a/C1-b/C1-c/C2/C2-a/C2-b
- D/D1



LEVEL 20 – 36



BANGSAR SOUTH



TOWER A

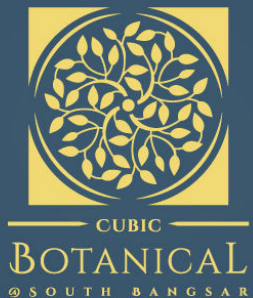
POOL VIEW

OLD KLANG ROAD/
TAMAN DESA

LEGEND:

- A/A1-a/A2/A2-a
- B1-a/B1-b/B2/B2-a/B2-b
- C/C1-a/C1-b/C1-c/C2/C2-a/C2-b
- D/D1



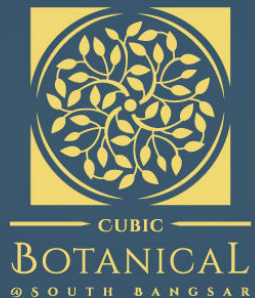


LEVEL 13A – 20
Except Level 17



200 ACRES
FOREST PARK



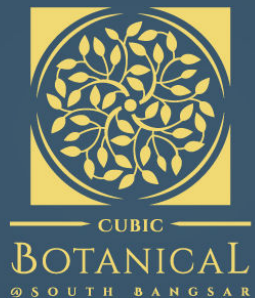


LEVEL 17



200 ACRES
FOREST PARK





LEVEL 20 – 36



200 ACRES
FOREST PARK





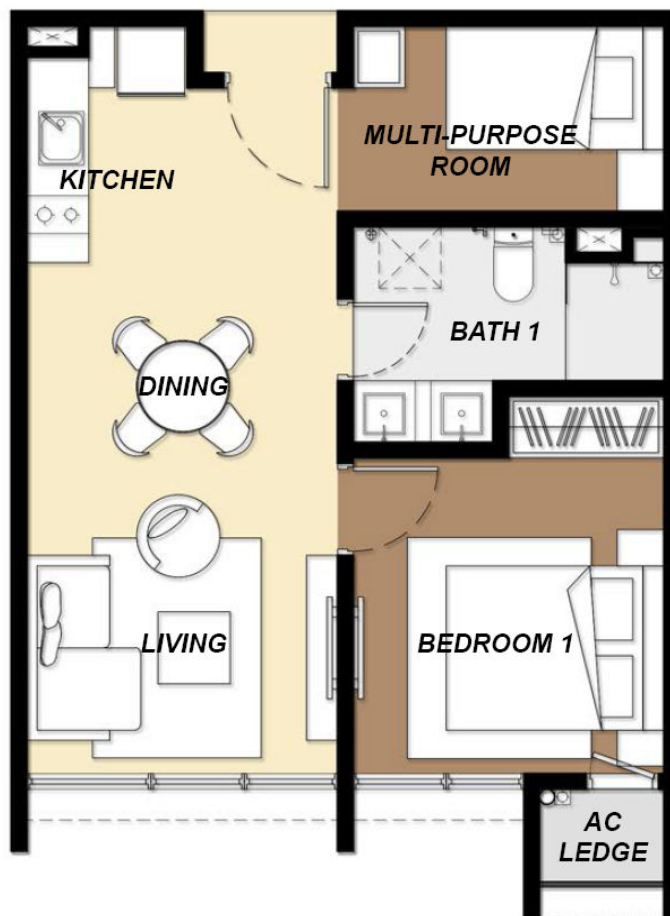
CUBIC
BOTANICAL
@ SOUTH BANGSAR

BLOCK A & B Typical Unit Layout

BEST
OF NATURE
@ YOUR DOORSTEP

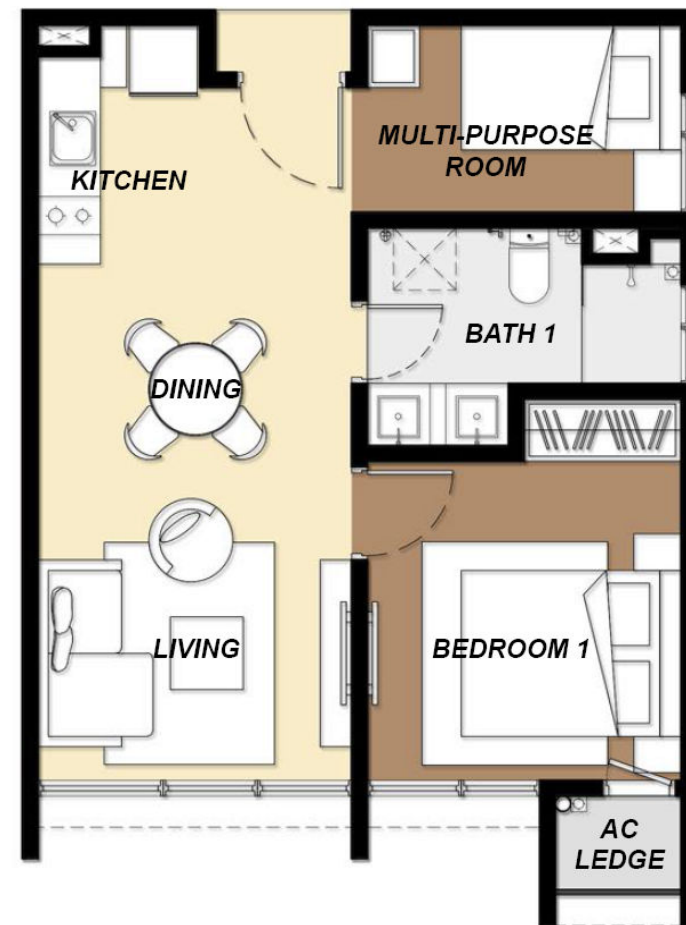
Type A

Built up: 518 sq.ft.
1 + 1 Rooms & 1 Bath



Type A1-a

Built up: 518 sq.ft.
1 + 1 Rooms & 1 Bath



*The information contained on this sales kit is for general information purposes only. The vendors reserves the right to modify, revise, or withdraw any or all of the same in its sole discretion without prior notice.



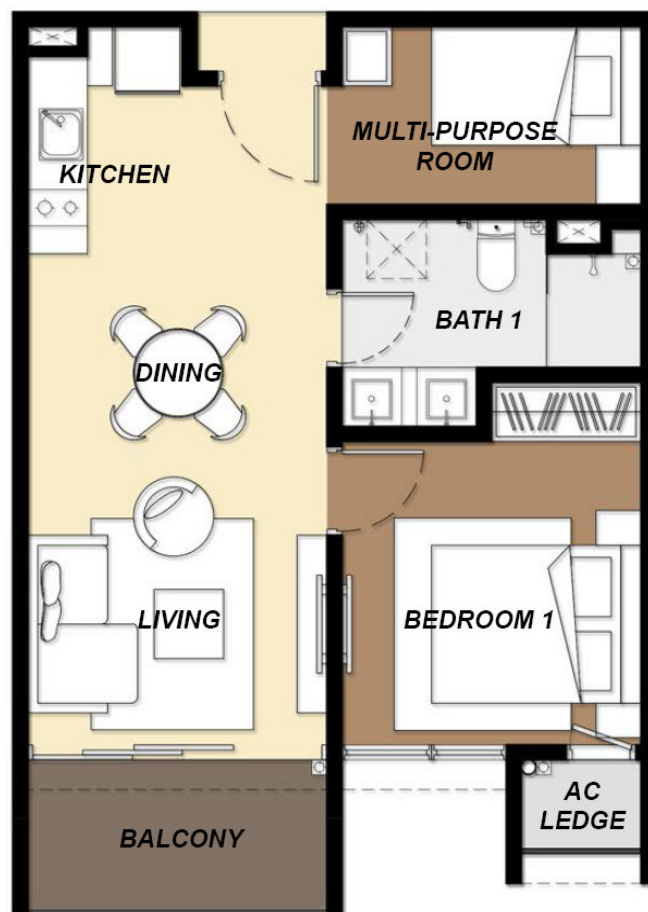
CUBIC
BOTANICAL
@ SOUTH BANGSAR

BLOCK A & B Typical Unit Layout

BEST
OF NATURE
@ YOUR DOORSTEP

Type A2

Built up: 571 sq.ft.
1 + 1 Rooms & 1 Bath



Type A2-a

Built up: 571 sq.ft. + 441 sq.ft.
1 + 1 Rooms & 1 Bath



*The information contained on this sales kit is for general information purposes only. The vendors reserves the right to modify, revise, or withdraw any or all of the same in its sole discretion without prior notice.



CUBIC
BOTANICAL
@ SOUTH BANGSAR

BLOCK A & B Typical Unit Layout

BEST
OF NATURE
@ YOUR DOORSTEP

TYPE A



*All Interior Design, images and illustrations are artist impressions only and are subject to change at the vendor's discretion



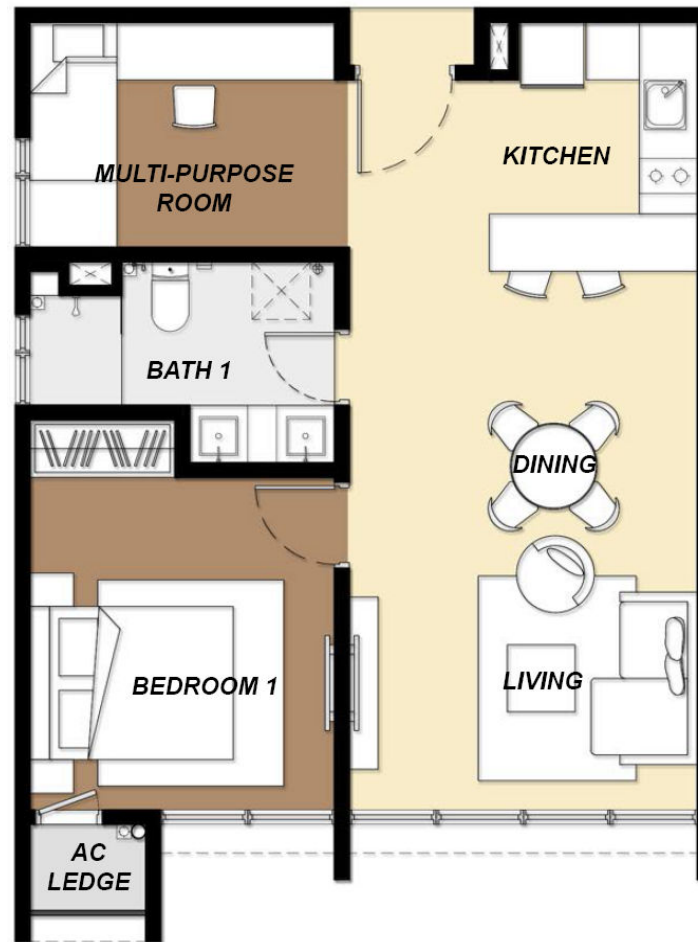
CUBIC
BOTANICAL
@ SOUTH BANGSAR

BLOCK A & B Typical Unit Layout

BEST
OF NATURE
@ YOUR DOORSTEP

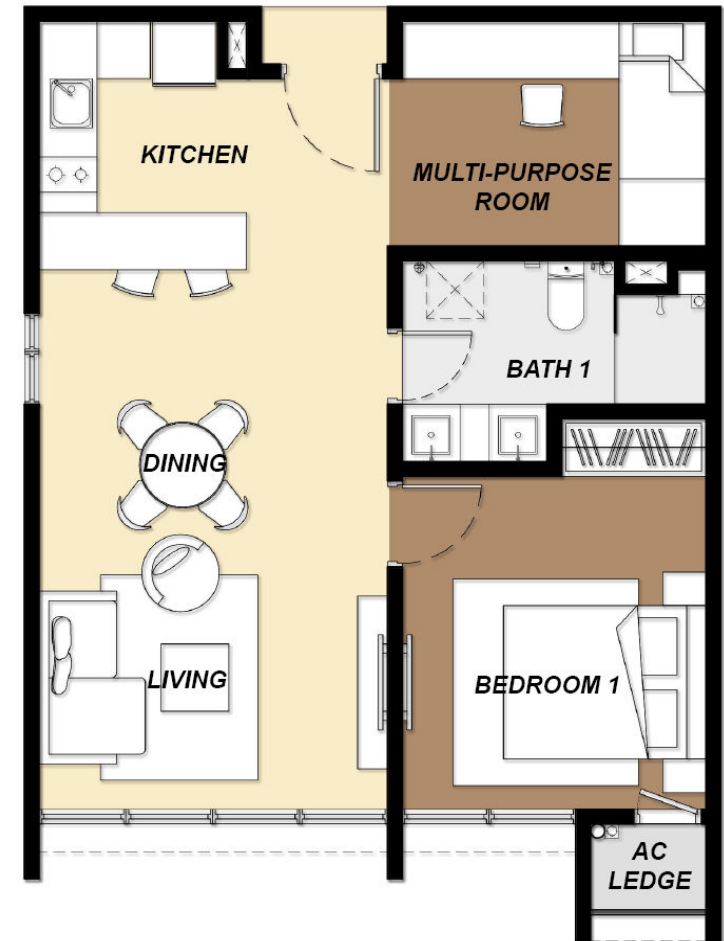
Type B1-a

Built up: 650 sq.ft.
1 + 1 Rooms & 1 Bath



Type B1-b

Built up: 650 sq.ft.
1 + 1 Rooms & 1 Bath



*The information contained on this sales kit is for general information purposes only. The vendors reserves the right to modify, revise, or withdraw any or all of the same in its sole discretion without prior notice.



CUBIC
BOTANICAL
@ SOUTH BANGSAR

BLOCK A & B Typical Unit Layout

BEST
OF NATURE
@ YOUR DOORSTEP

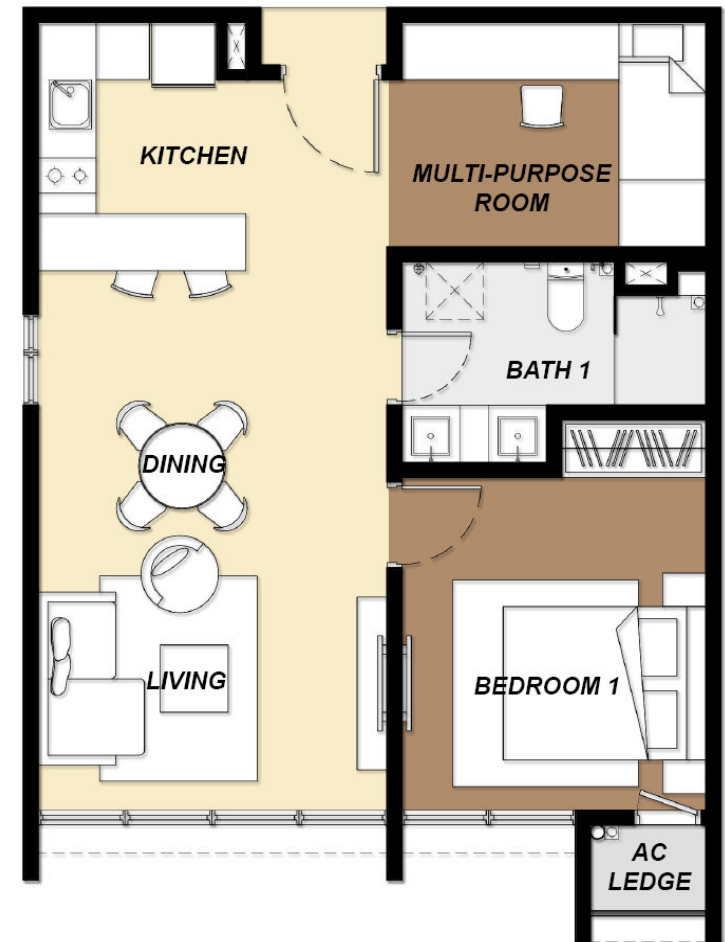
Type B1-a

Built up: 650 sq.ft.
1 + 1 Rooms & 1 Bath



Type B1-b

Built up: 650 sq.ft.
1 + 1 Rooms & 1 Bath



*The information contained on this sales kit is for general information purposes only. The vendors reserves the right to modify, revise, or withdraw any or all of the same in its sole discretion without prior notice.



CUBIC
BOTANICAL
@ SOUTH BANGSAR

BLOCK A & B Typical Unit Layout

BEST
OF NATURE
@ YOUR DOORSTEP





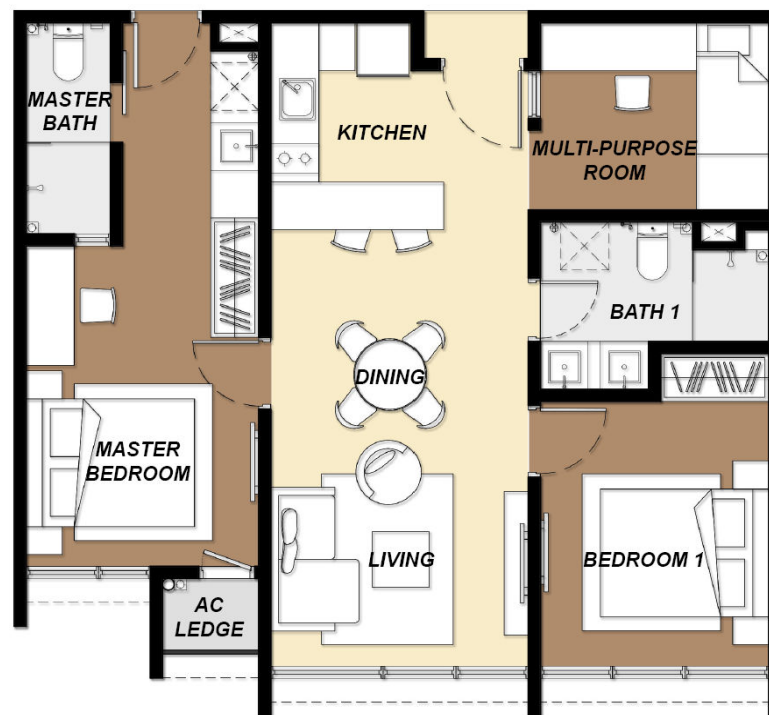
CUBIC
BOTANICAL
@ SOUTH BANGSAR

BLOCK A & B Typical Unit Layout

BEST
OF NATURE
@ YOUR DOORSTEP

Type C (Dual-Key)

Built up: 805 sq.ft.
2 + 1 Rooms & 2 Baths



Type C1-a (Dual-Key)

Built up: 805 sq.ft.
2 + 1 Rooms & 2 Baths



*The information contained on this sales kit is for general information purposes only. The vendors reserves the right to modify, revise, or withdraw any or all of the same in its sole discretion without prior notice.



CUBIC
BOTANICAL
@ SOUTH BANGSAR

BLOCK A & B Typical Unit Layout

BEST
OF NATURE
@ YOUR DOORSTEP

Type C1-b (Dual-Key)

Built up: 805 sq.ft.
2 + 1 Rooms & 2 Baths



Type C1-c (Dual-Key)

Built up: 805 sq.ft.
2 + 1 Rooms & 2 Baths



*The information contained on this sales kit is for general information purposes only. The vendors reserves the right to modify, revise, or withdraw any or all of the same in its sole discretion without prior notice.



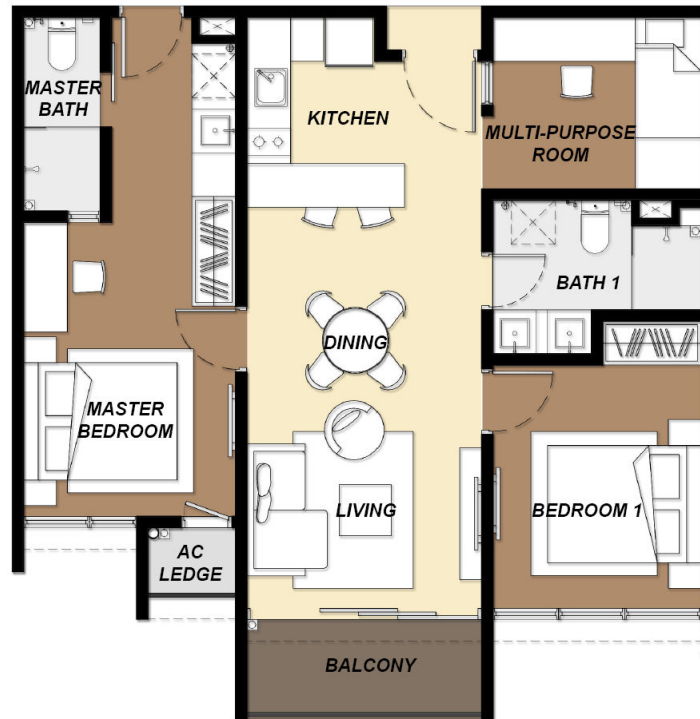
CUBIC
BOTANICAL
@ SOUTH BANGSAR

BLOCK A & B Typical Unit Layout

BEST
OF NATURE
@ YOUR DOORSTEP

Type C2 (Dual-Key)

Built up: 850 sq.ft.
2 + 1 Rooms & 2 Baths



Type C2-a (Dual-Key)

Built up: 850 sq.ft.
2 + 1 Rooms & 2 Baths



*The information contained on this sales kit is for general information purposes only. The vendors reserves the right to modify, revise, or withdraw any or all of the same in its sole discretion without prior notice.



CUBIC
BOTANICAL
@ SOUTH BANGSAR

BLOCK A & B Typical Unit Layout

BEST
OF NATURE
@ YOUR DOORSTEP

Type C2-b (Dual-Key)

Built up: 850 sq.ft.

2 + 1 Rooms & 2 Baths



*The information contained on this sales kit is for general information purposes only. The vendors reserves the right to modify, revise, or withdraw any or all of the same in its sole discretion without prior notice.



CUBIC
BOTANICAL
@ SOUTH BANGSAR

BLOCK A & B Typical Unit Layout

BEST
OF NATURE
@ YOUR DOORSTEP





CUBIC
BOTANICAL
@ SOUTH BANGSAR

BLOCK A & B Typical Unit Layout

BEST
OF **NATURE**
@ YOUR DOORSTEP

Type D

Built up: 900 sq.ft.

2 + 1 Rooms & 2 Baths



*The information contained on this sales kit is for general information purposes only. The vendors reserves the right to modify, revise, or withdraw any or all of the same in its sole discretion without prior notice.



CUBIC
BOTANICAL
@ SOUTH BANGSAR

BLOCK A & B Typical Unit Layout

BEST
OF NATURE
@ YOUR DOORSTEP

Type D1

Built up: 900 + 638 sq.ft.

2 + 1 Rooms & 2 Baths



*The information contained on this sales kit is for general information purposes only. The vendors reserves the right to modify, revise, or withdraw any or all of the same in its sole discretion without prior notice.



CUBIC
BOTANICAL
@ SOUTH BANGSAR

BLOCK A & B Typical Unit Layout

BEST
OF NATURE
@ YOUR DOORSTEP



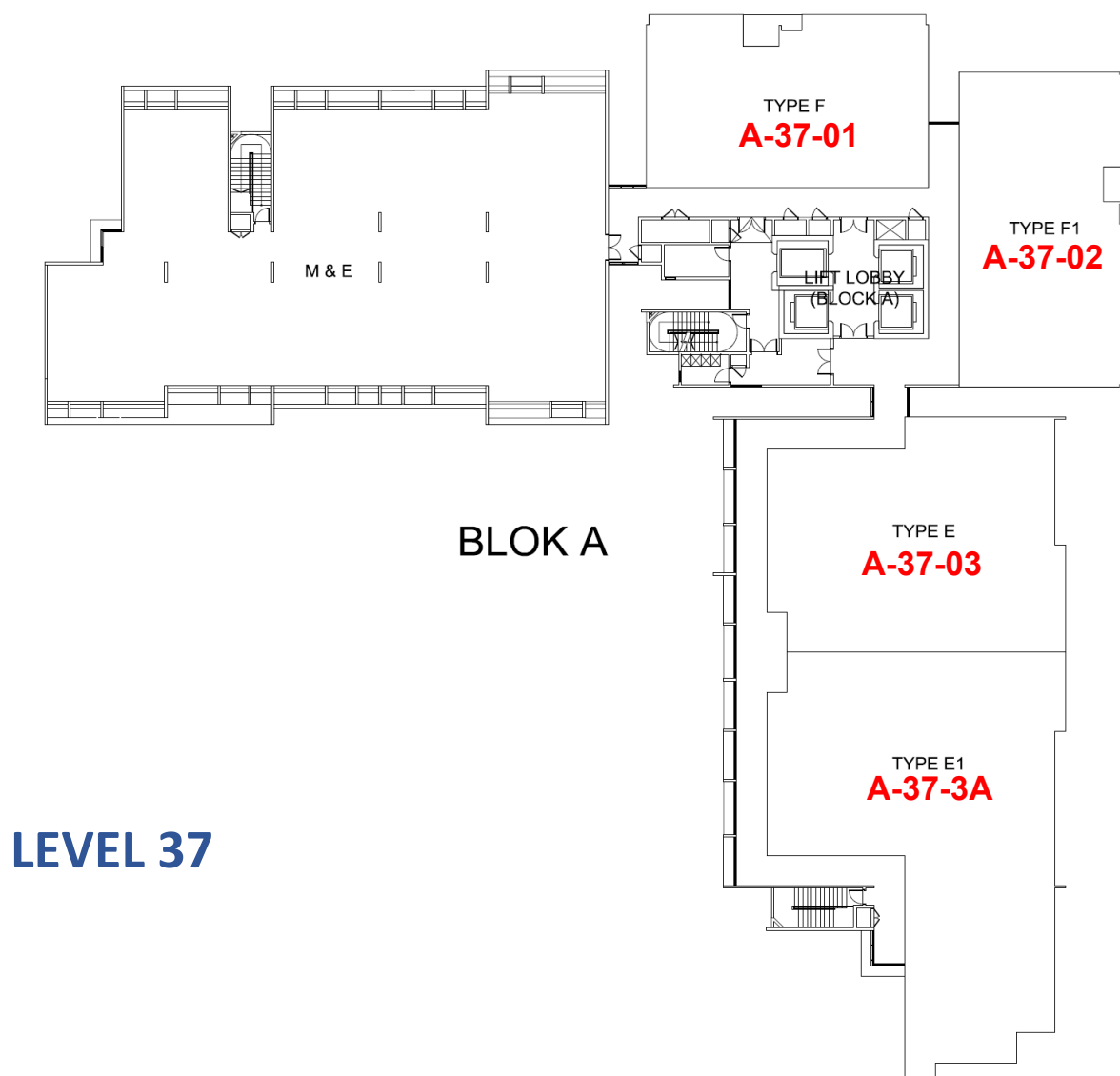
TYPE D

*All Interior Design, images and illustrations are artist impressions only and are subject to change at the vendor's discretion



CUBIC
BOTANICAL
@ SOUTH BANGSAR

BLOCK A & B Typical Unit Layout



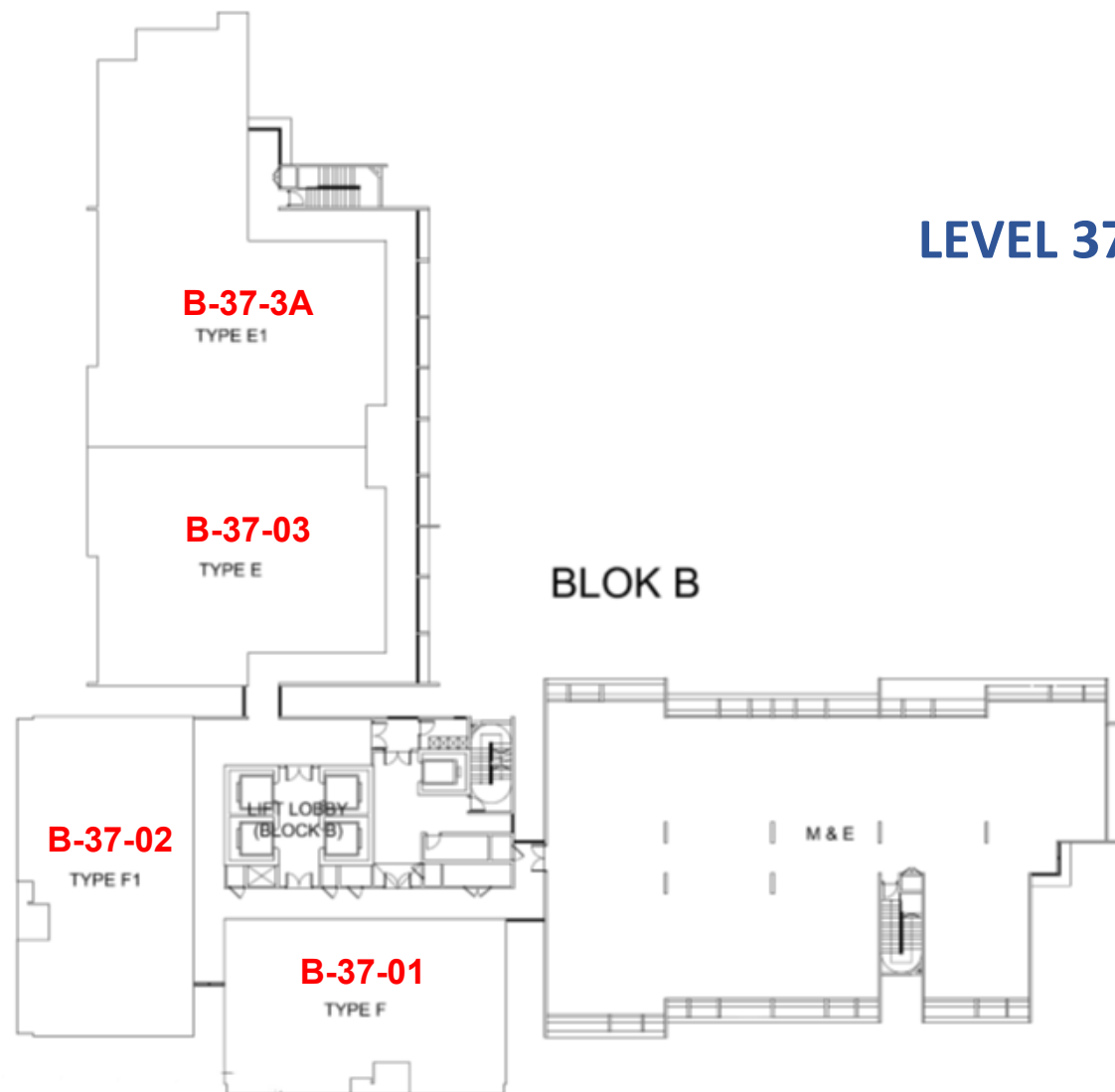
*The information contained on this sales kit is for general information purposes only. The vendors reserves the right to modify, revise, or withdraw any or all of the same in its sole discretion without prior notice.



CUBIC
BOTANICAL
@ SOUTH BANGSAR

BLOCK A & B Typical Unit Layout

BEST
OF NATURE
@ YOUR DOORSTEP



*The information contained on this sales kit is for general information purposes only. The vendors reserves the right to modify, revise, or withdraw any or all of the same in its sole discretion without prior notice.



CUBIC
BOTANICAL
@ SOUTH BANGSAR

BLOCK A & B Typical Unit Layout

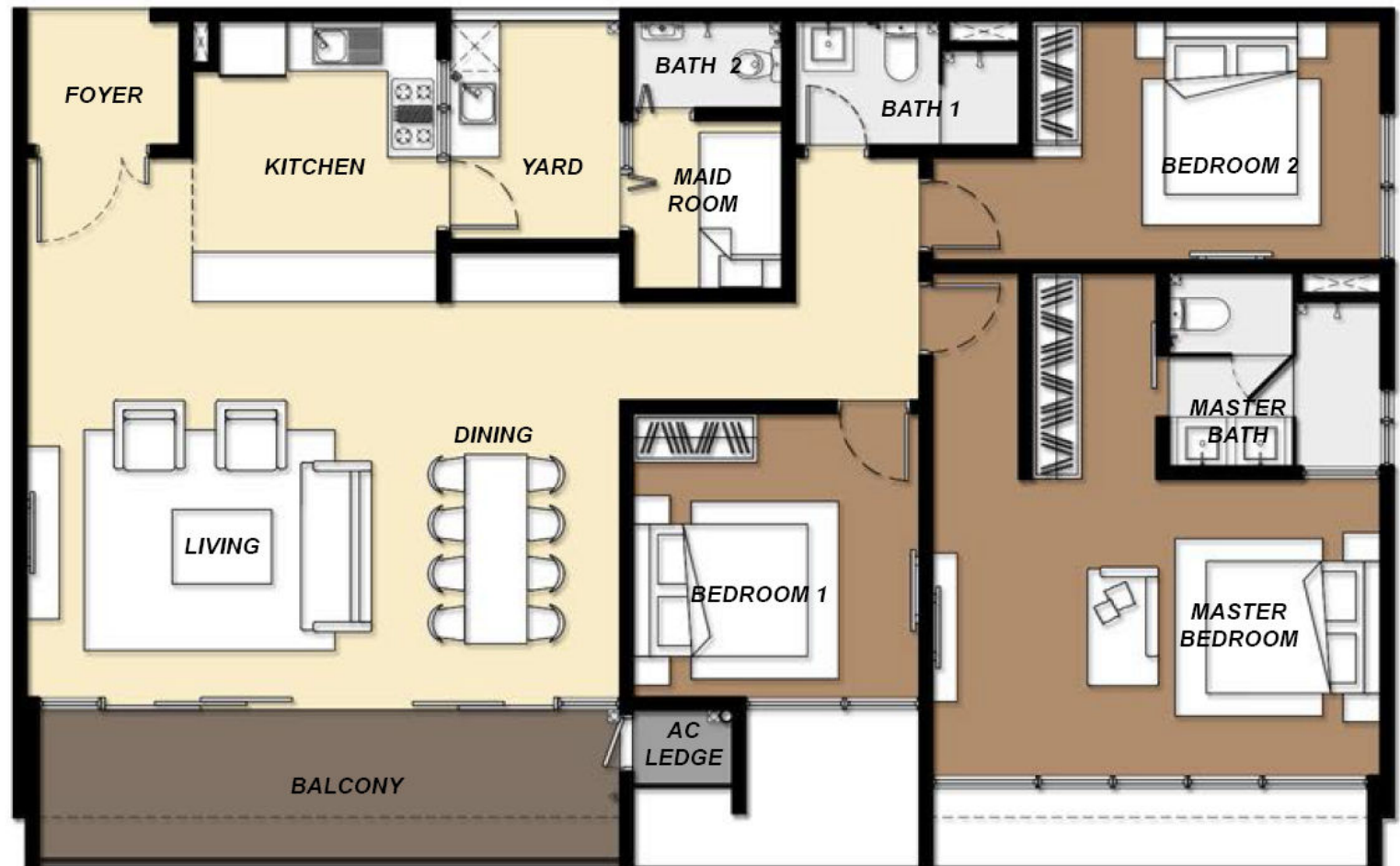
Unit No: A/B-37-01

BEST
OF NATURE
@ YOUR DOORSTEP

Rose

Type F

Built up: 1,701 sq.ft.
3 + 1 Rooms + 3 Baths



*The information contained on this sales kit is for general information purposes only. The vendors reserves the right to modify, revise, or withdraw any or all of the same in its sole discretion without prior notice.



CUBIC
BOTANICAL
@ SOUTH BANGSAR

BLOCK A & B Typical Unit Layout

Unit No: A/B-37-02

BEST
OF NATURE
@ YOUR DOORSTEP

Orchid

Type F1

Built up: 1,954 sq.ft.
3 + 1 Rooms + 3 Baths



*The information contained on this sales kit is for general information purposes only. The vendors reserves the right to modify, revise, or withdraw any or all of the same in its sole discretion without prior notice.



CUBIC
BOTANICAL
@ SOUTH BANGSAR

BLOCK A & B Typical Unit Layout

Unit No: A/B-37-03

BEST
OF NATURE
@ YOUR DOORSTEP

Lily

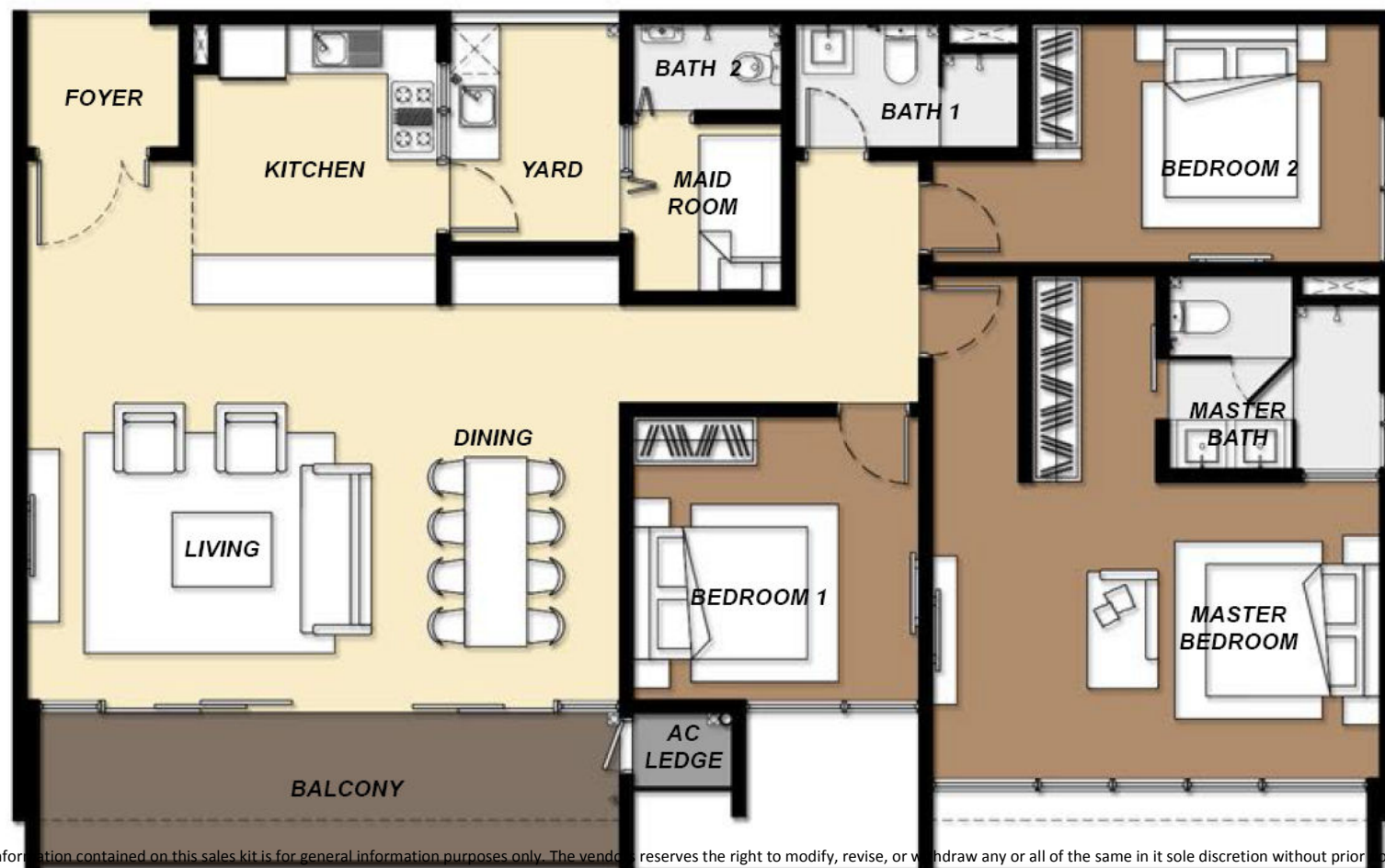
Type E

Built up: 2,018 sq.ft.

Private Deck : 237 sq.ft.

Total : 2,255 sq.ft.

3 + 1 Rooms + 5 Baths



*The information contained on this sales kit is for general information purposes only. The vendor reserves the right to modify, revise, or withdraw any or all of the same in its sole discretion without prior notice.



CUBIC
BOTANICAL
@ SOUTH BANGSAR

BLOCK A & B Typical Unit Layout

Unit No: A/B-37-01

BEST
OF NATURE
@ YOUR DOORSTEP

Bird of Paradise

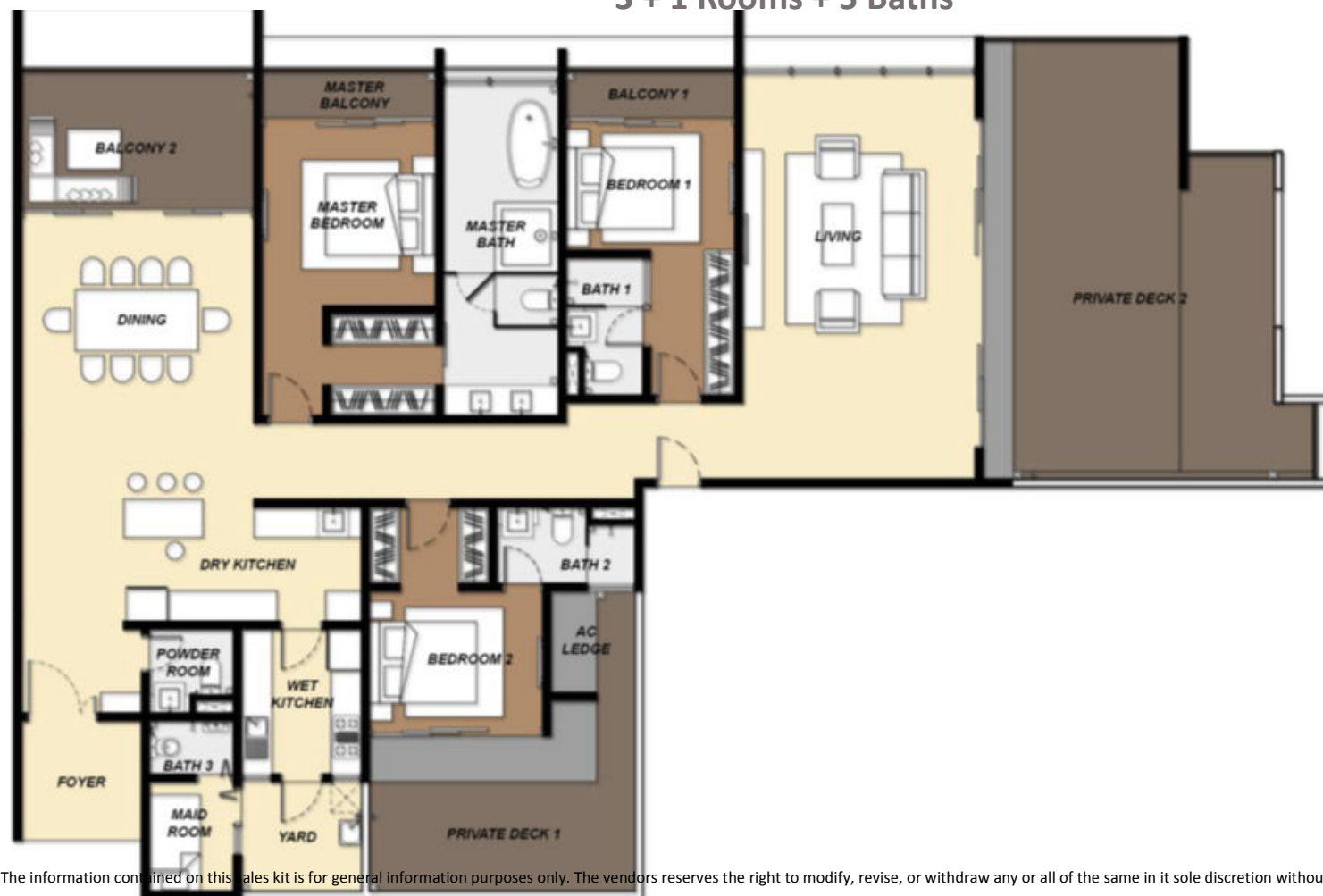
Type E1

Built up: 2,422 sq.ft.

Private Deck : 748 sq.ft.

Total : 3,170 sq.ft

3 + 1 Rooms + 5 Baths



*The information contained on this sales kit is for general information purposes only. The vendors reserves the right to modify, revise, or withdraw any or all of the same in its sole discretion without prior notice.